

4-1

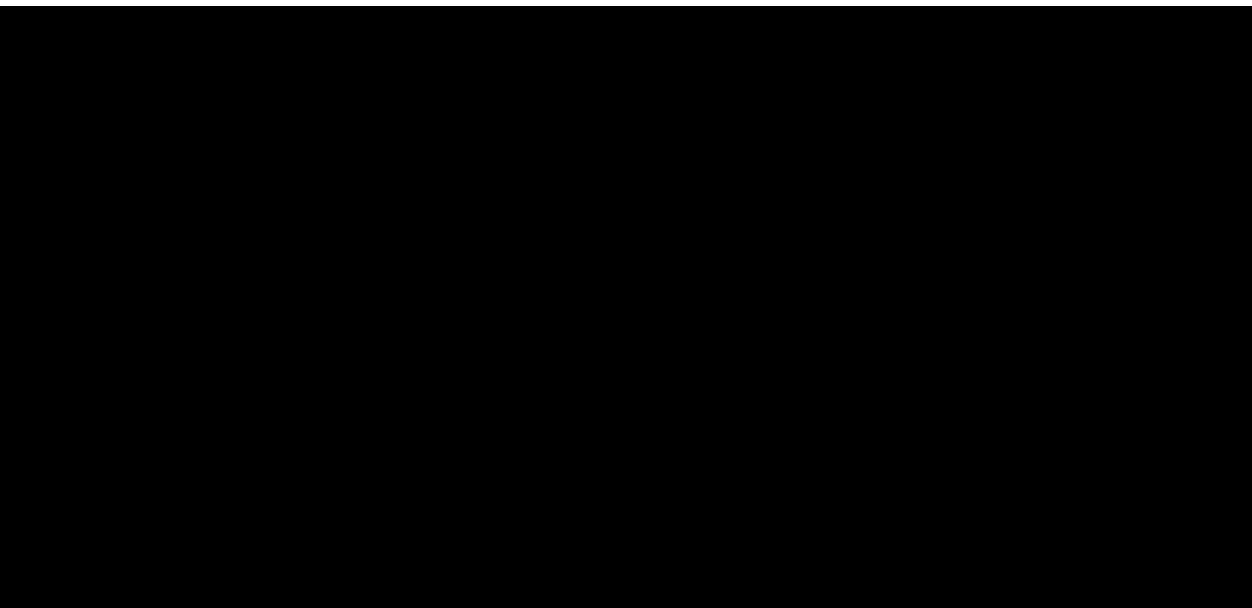
					(kV _{RMS})	

7

7.1 1,2

:			

7.2 ESD 額定値



CA-IS2631HA
 Preliminary Version, 2023/04/20

7.6 隔离特性

		A	
			μ
DIN V VDE V 0884-11:2017-01 ²			
	1.2/50μ		
		5	
		5	
		5	
UL 1577			
ISO	ISO		
	ISO		
:			

7.7 安全相关认证

VDE()	UL()

~~3.0V~~ 5V 3.3V

[Redacted]					
		ISO			
		ISO			

CA-IS2631HA

Preliminary Version, 2023/04/20

7.9.3 3.3V 3.3V

	ISO		
	ISO		
	ISO		
	ISO	= 0.1μ 1Qμ	
:			

7.10 时序特性

7.10.1 5V 5V

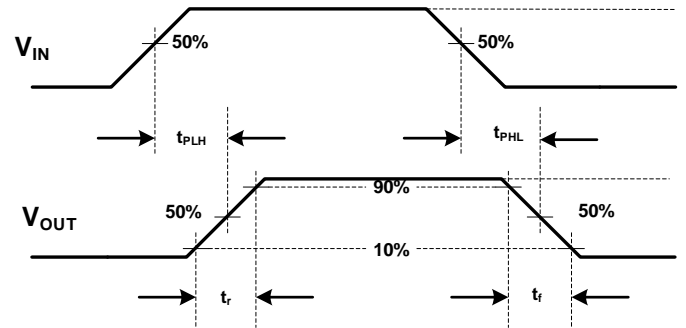
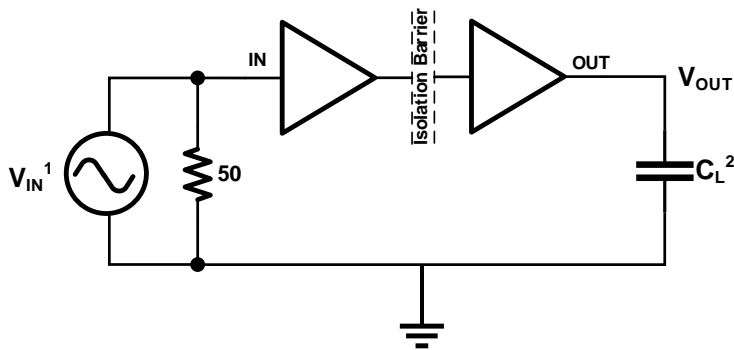
:			

7.10.2 5V 3.3V

:			

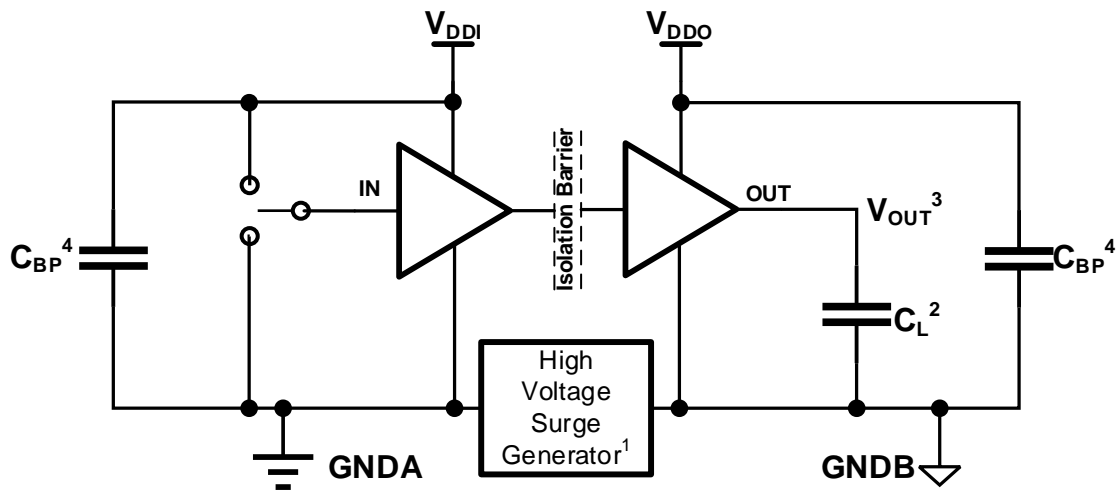
7.10.3 3.3V 3.3V

:			



:
 = 50 100

8-1



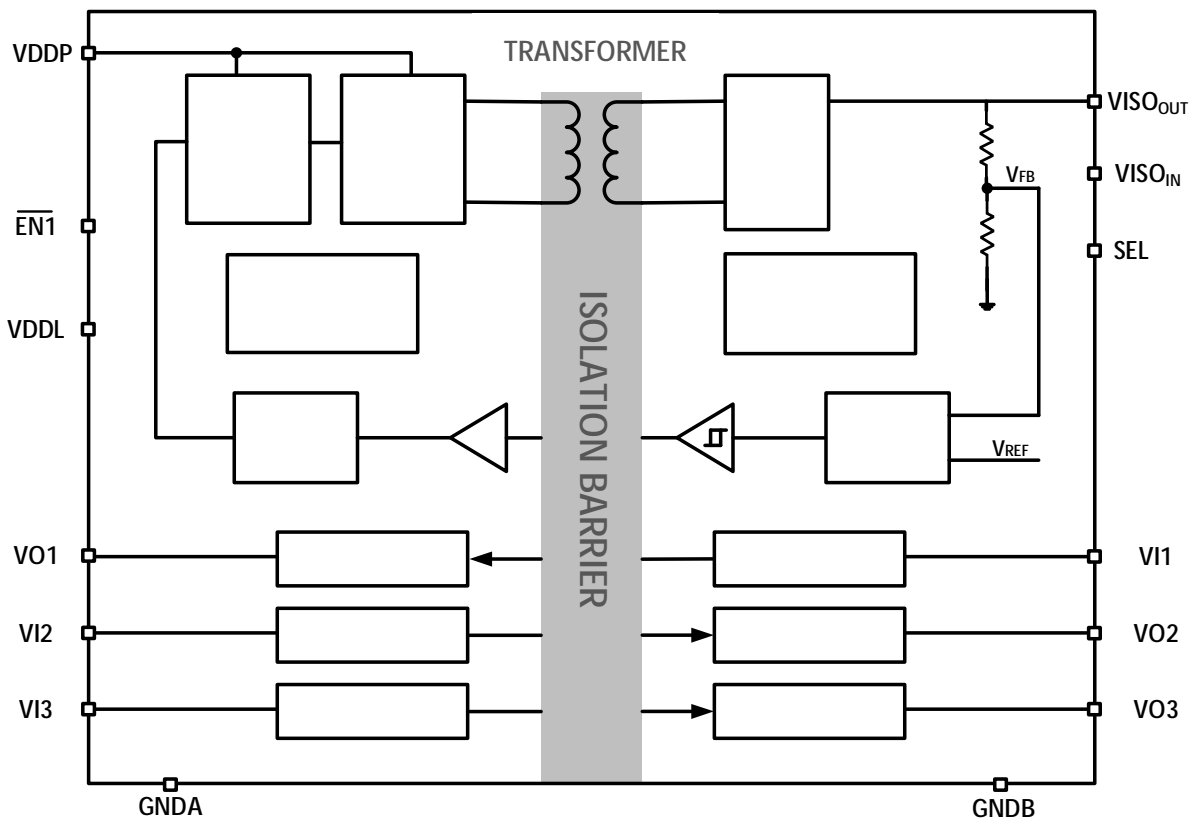
:
 μ
 μ

8-2

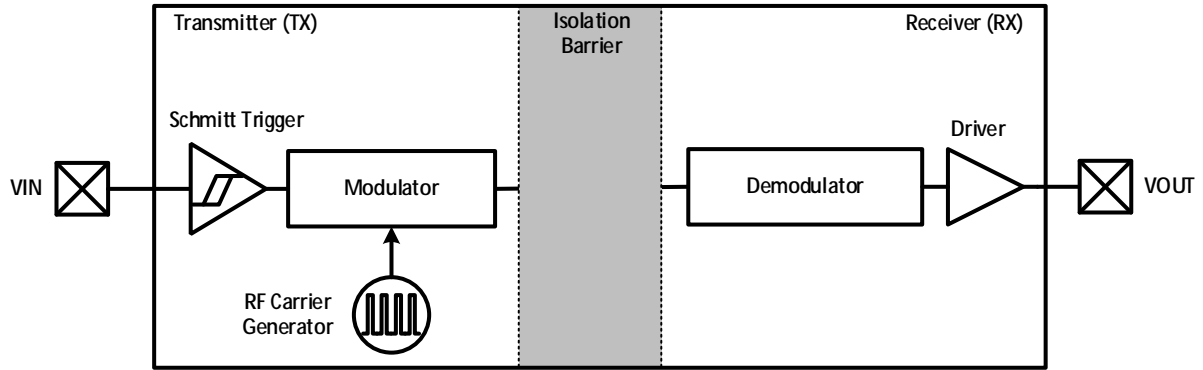
9

9.1 工作原理

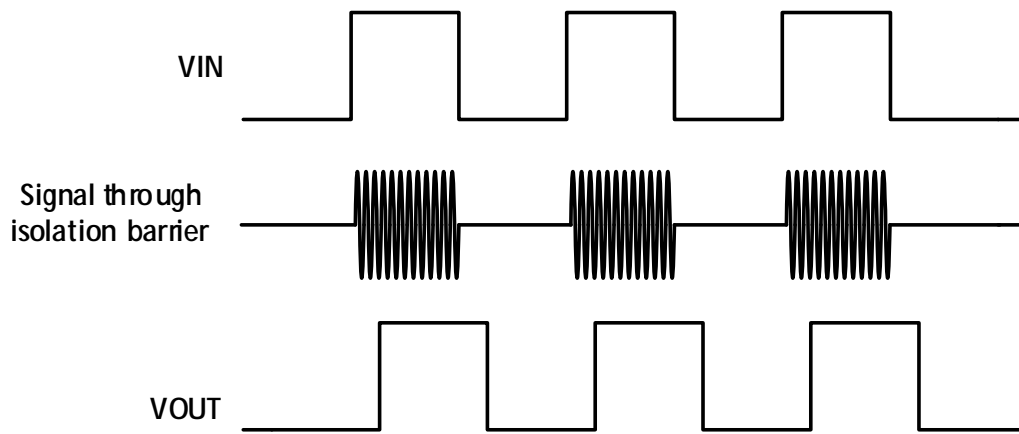
9.2 功能框图



9-1 CA-IS2631HA

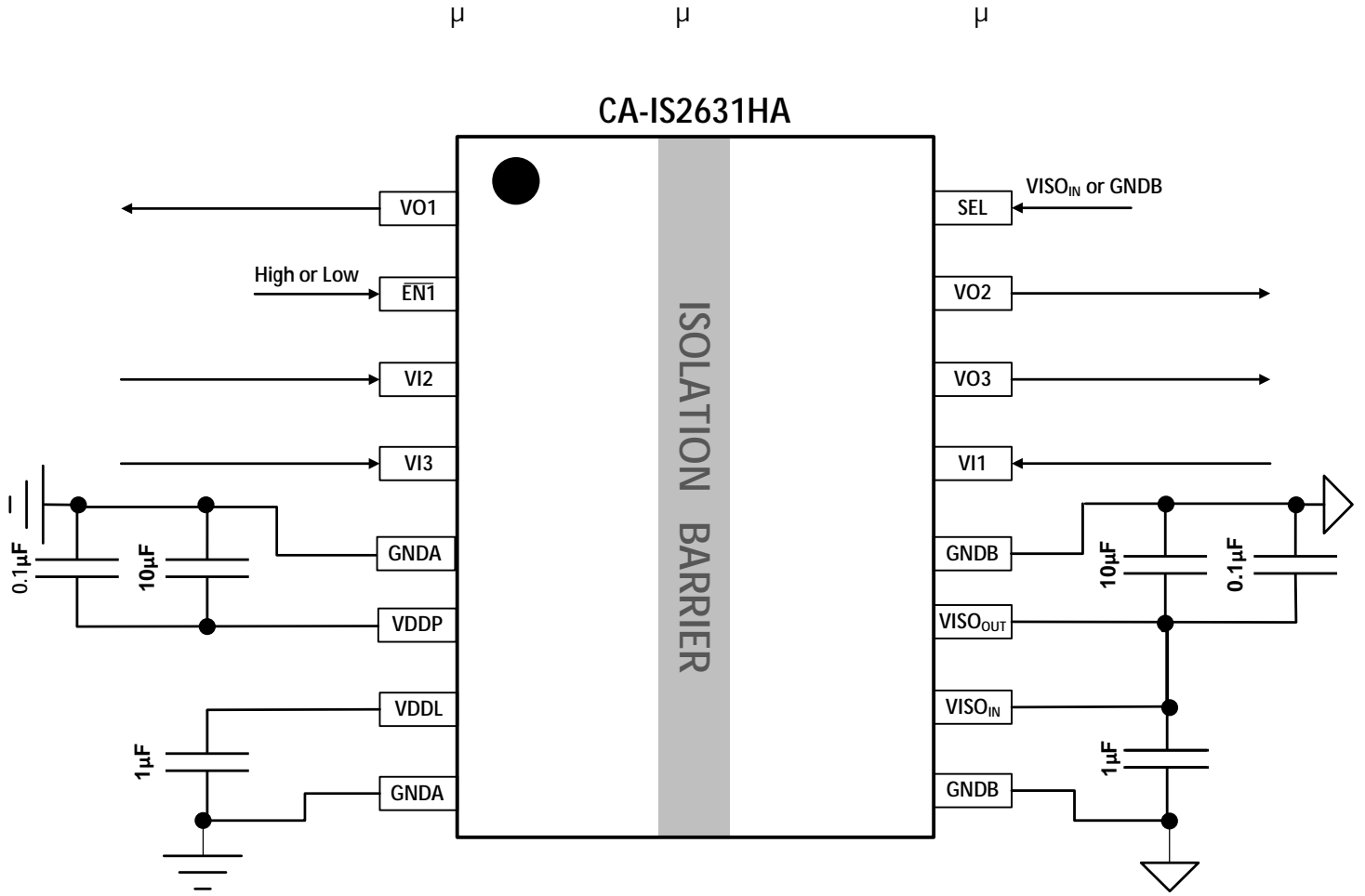


9-2

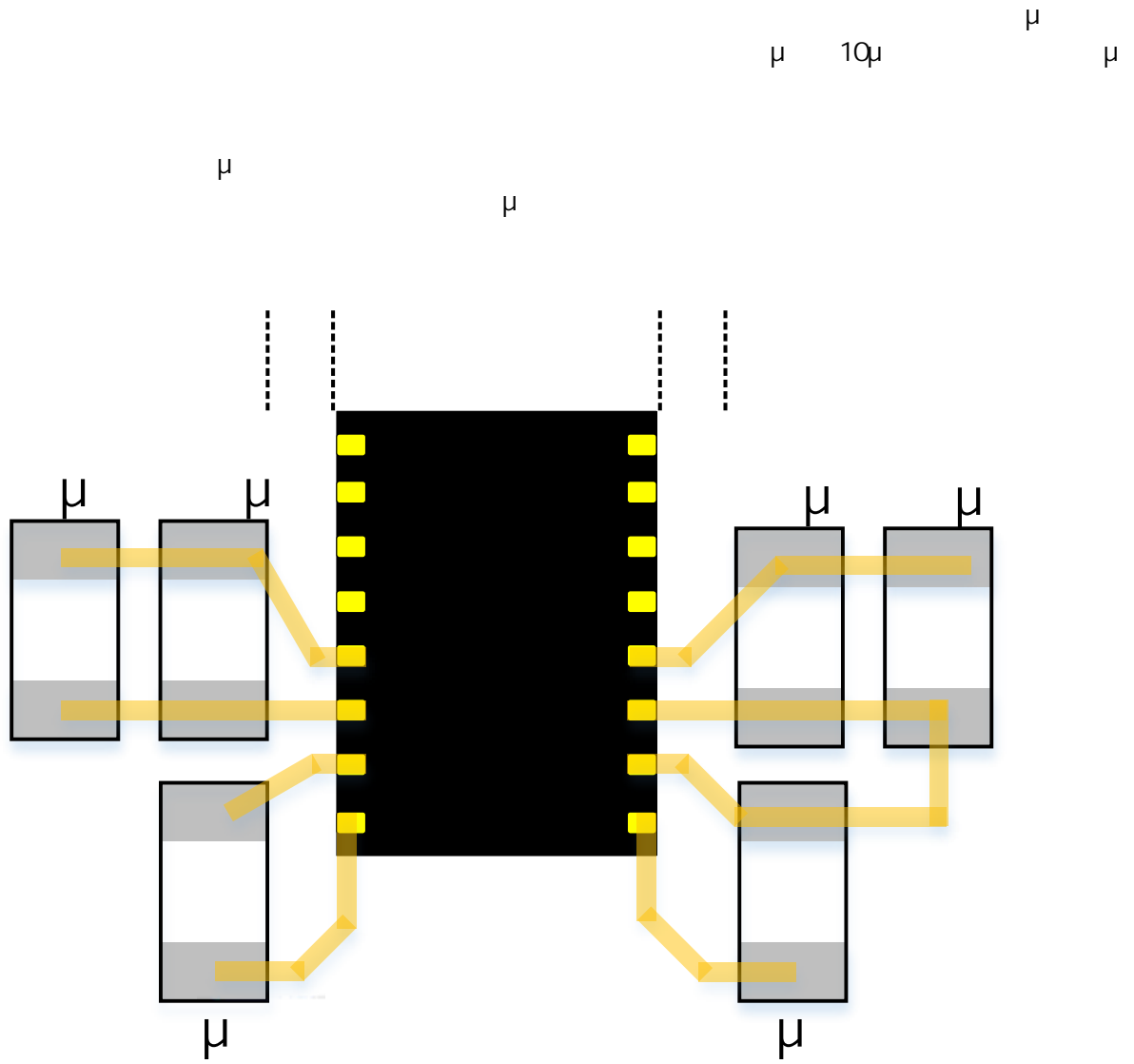


9-3

10.1 典型应用

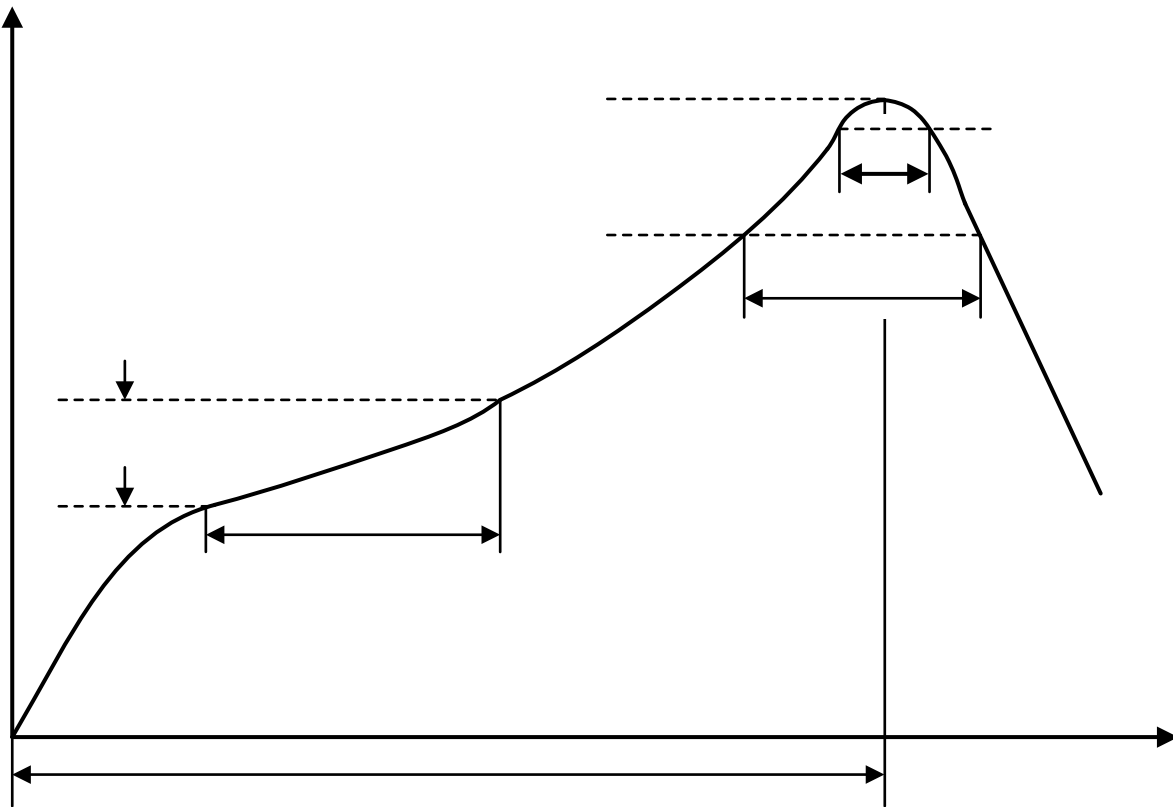


10.2 PCB 布板



10-3 PCB

12



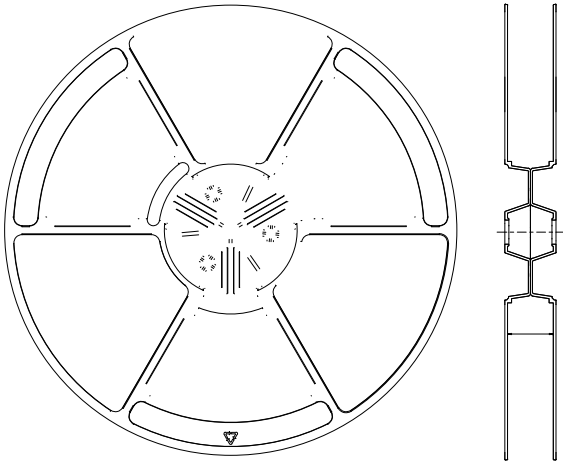
13-1

13-1

CA-IS2631HA

Preliminary Version, 2023/04/20

13



Device	Package Type	Package Drawing	Pins	SPQ	Reel Diameter (mm)	Reel Width W1 (mm)	A0 (mm)	B0 (mm)	K0 (mm)	P1 (mm)	W (mm)	Pin1 Quadrant

