

ì X ñ t ñ < s D ^

r

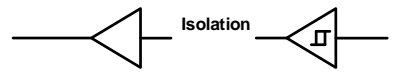
- 
- 
- 
- 
- 
- 
- 
- 
- 
- 
- 
- 
- 
- 
- 
- 
- 
- 
- 
- 

BG  
 B F  
 B B  
 B  
 F B  
 K  
 B

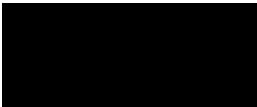
KF

B  
 B  
 G G  
 B B  
 KF

B	B	



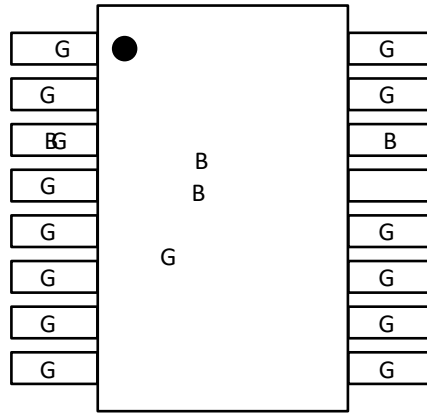
B KF



r/^i i i i ñ t  
s CE • j x u i i i i i i i i o

í	í		
î	í		
ï	í		
ö	î		
ñ	ï	B <sub>85</sub>	
ò	ö	ô	í ö
		õ	í ñ
		î ï W	í ñ
		í í	í ò
		í î	í ó
		í ï	í ô
		í ö	í õ
ó	õ		

	G		G



წრი რ/აქსიონტი

წრი რ/აქსიონტი

G			
G			BG
BG			BG BG
G			G
G			
G			G
			B B B B B B B G B
B			B BG
G			B
G			
G			" "



6.1 绝对最大额定值<sup>1,2</sup>

BG								
B								
G	G				BG			
					B			
E								
B			G		G			

6.2 ESD 额定值

--	--	--	--	--	--	--	--	--





6.6 隔离特性

		t	
K			
B			
B	B G B		
	B	B	
B		KF	BB
		KF	BB
		KF	BBB
/ E s s i o s o r i W i i n o			
B KF			
B F			KF
B F	B F		
	B F		
B F	B		
	B F		
	B F		
	B KF		
	B F		
	B KF		
	B F		
B	B F		
K <sub>B</sub>	B	F	
	B		
	B		
h> i n o o			
B	B		KF
	B		

6.7 安全相关认证

s ~ •	^ ~ •	h > ~ •	Y ~ •	dh s ~ •
BG	B B B			G G



6.8 电气特性

E      EG      B      EG      B

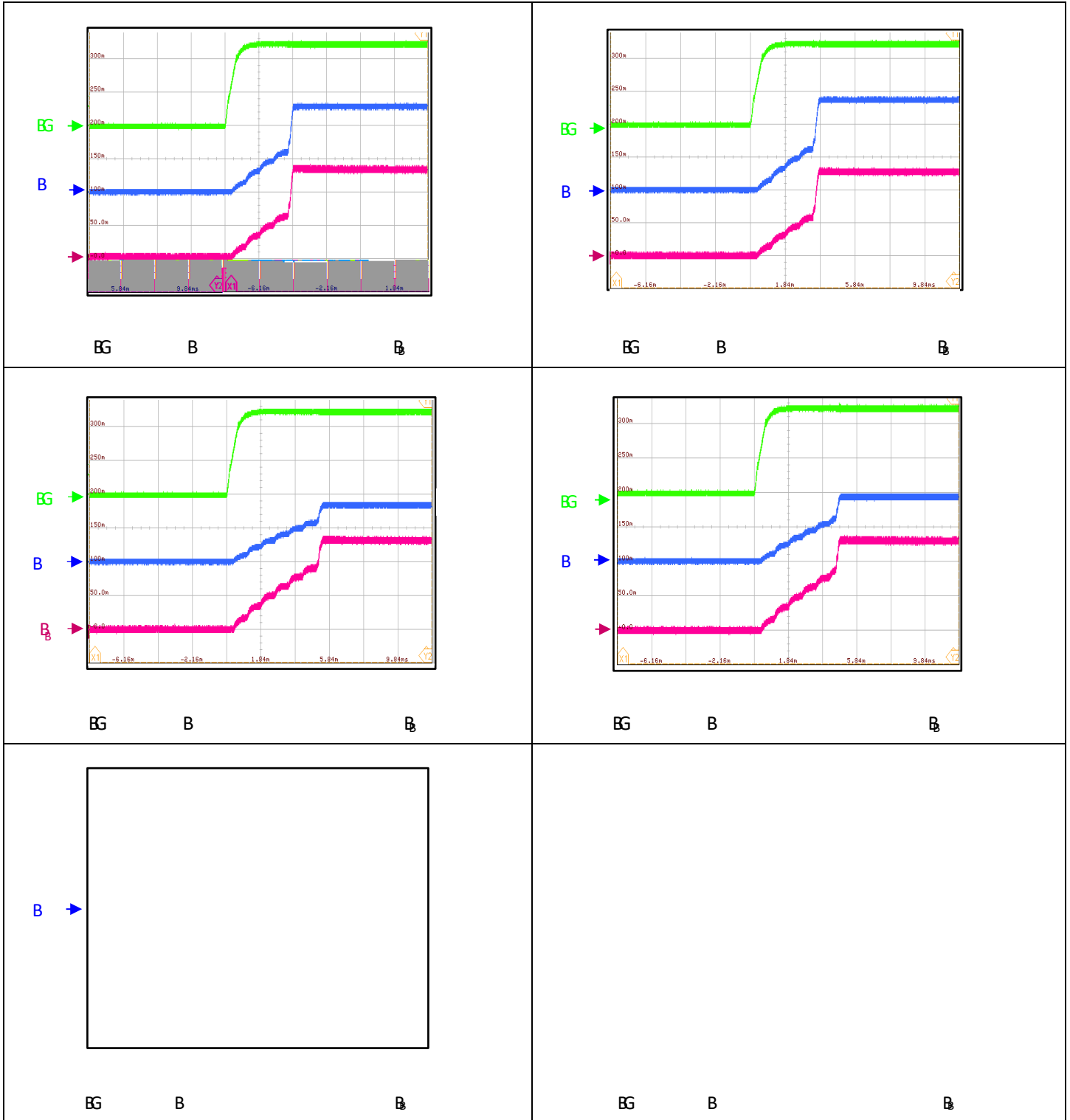
B <sub>EG</sub> G	G		
B <sub>EG</sub>	G B      B		
	G B      B		
	G B      G		
	G B      G		
B <sub>EG</sub> B	B      G		
B <sub>G</sub> G			
B <sub>G</sub> G			
B <sub>G</sub>	EG      G		
r			
B	B      B <sub>B</sub>		
	B      B <sub>B</sub>		
	G      B <sub>B</sub>		
	B      B <sub>B</sub>		
B <sub>KB</sub>	F      B      BB		
	F      G      BB		
B <sub>EG</sub>	B      BB      EG		
	G      BB		
	EG		
B	B      BB		
	G      BB		
	B <sub>B</sub> B		
	B <sub>B</sub> B		
F B	G      G      F      KF		
	EG      B		

6.9 潮敏等级

	B      E      E		F

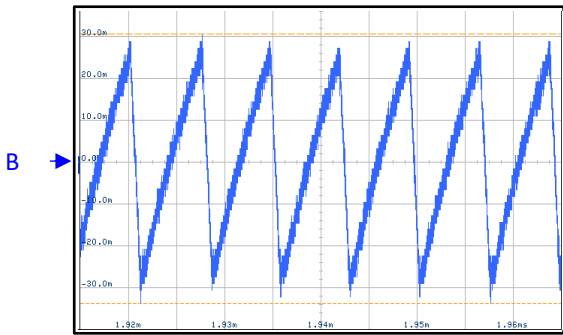


7.1 软启动和输出短路恢复波形

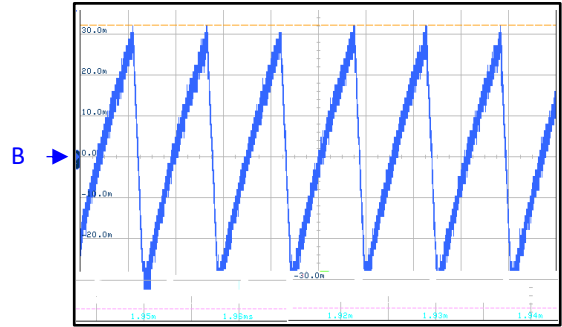




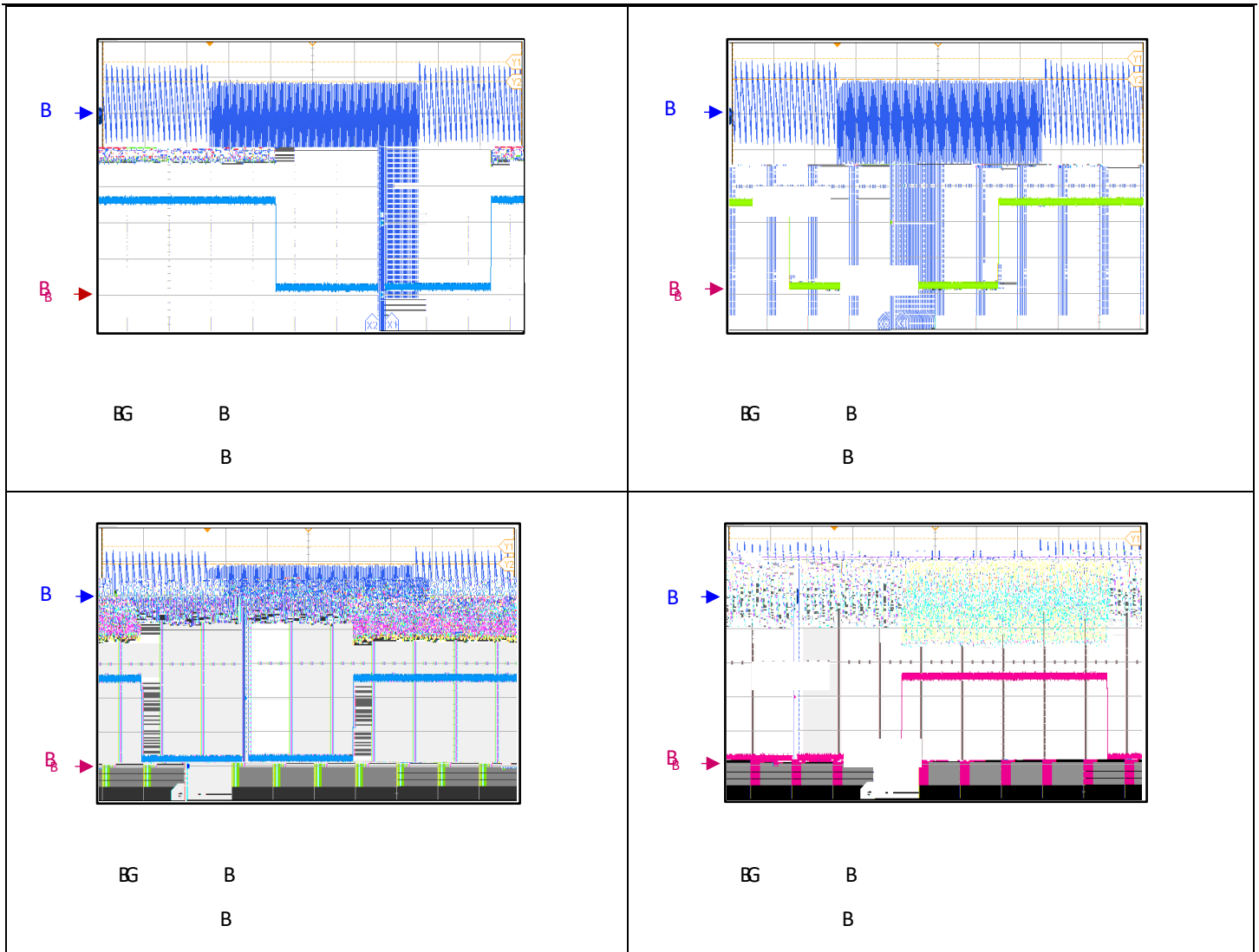
7.2 給山由匠分油川及站大誌誌



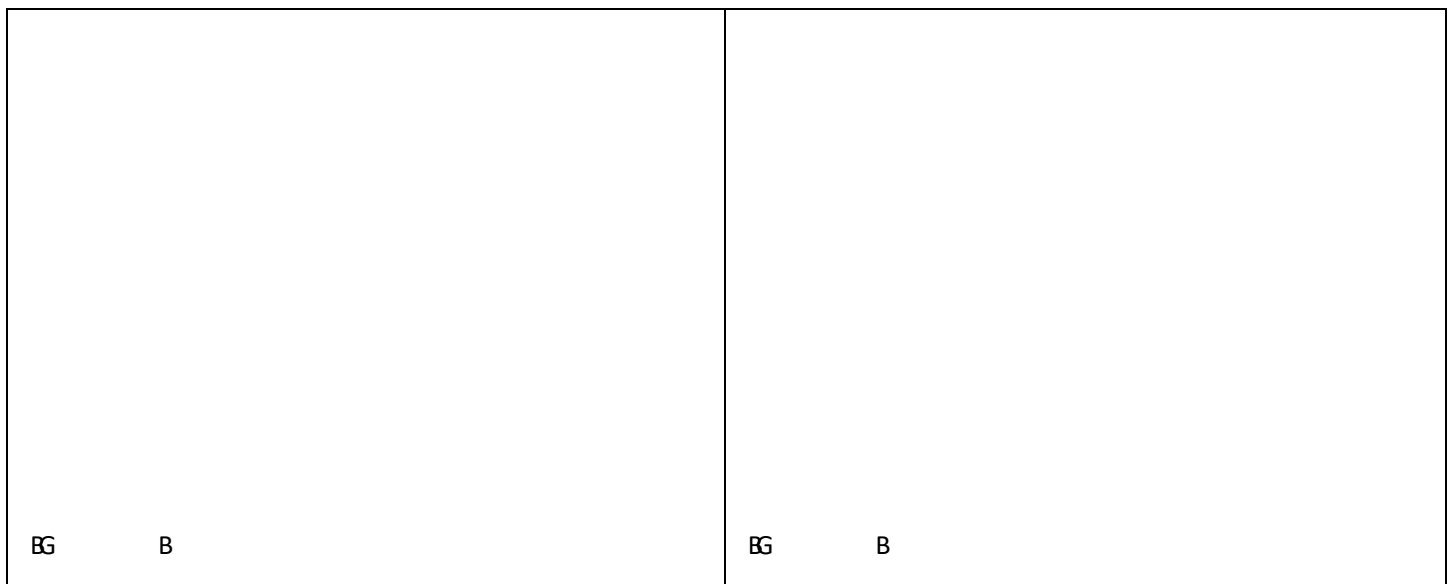
BG B B



BG B B



7.3 输出电压随负载变化和输入电压的变化

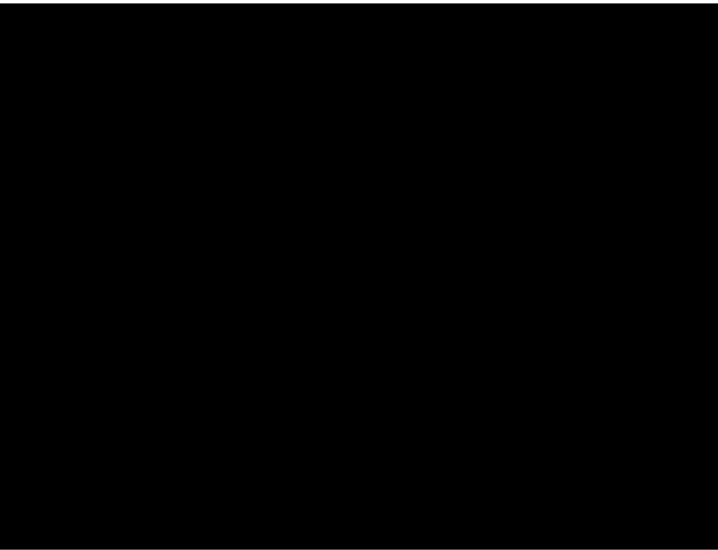




r/^iit  
s CE•jxiiio

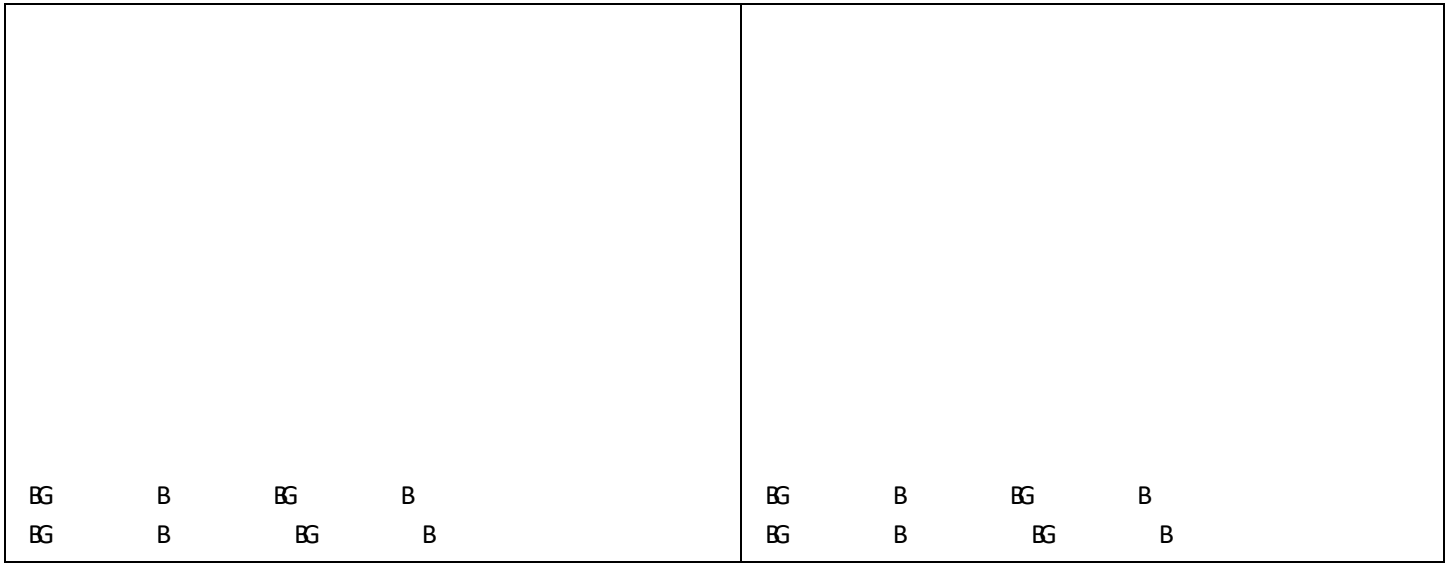
BG B

BG B



BG B

7.4 静效率随负载电流以及表面温度的变化



7.5 静态电流  $I_{VIN\_SD}$  随输入电压的变化

G BG G B BG



### 8.1 工作原理

B

B

BG

B

F

BG

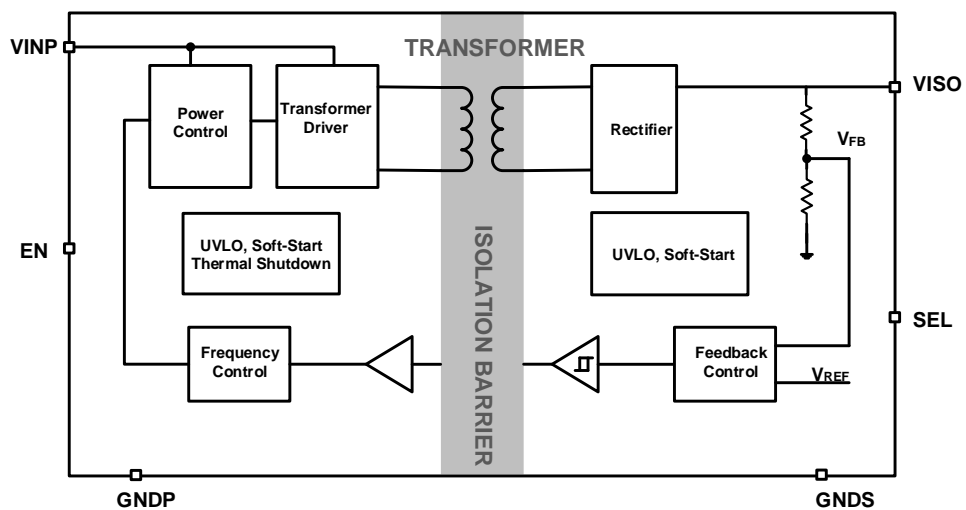
B

F

B

B

### 8.2 功能框图



ôr í

G

G

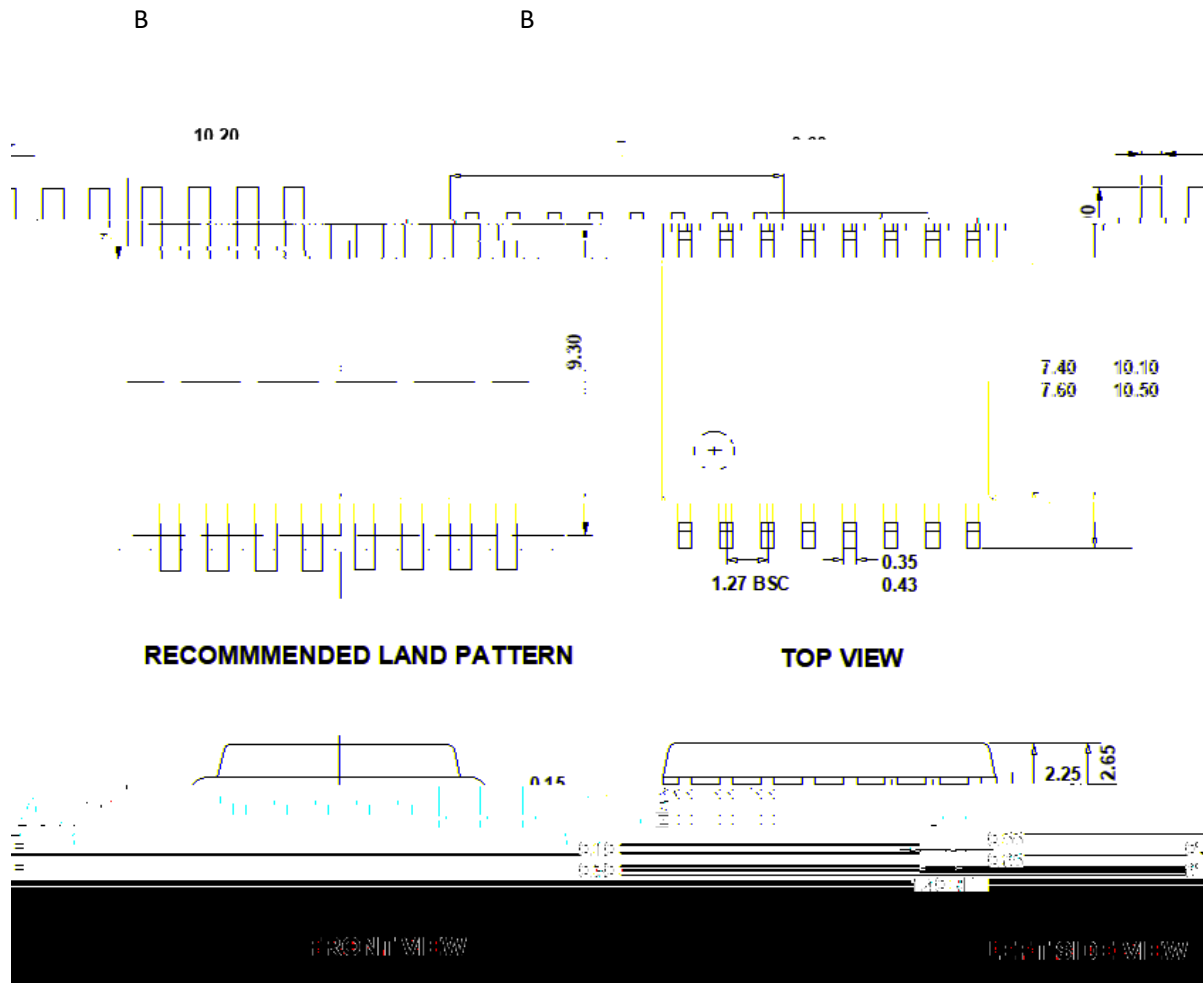
G

B

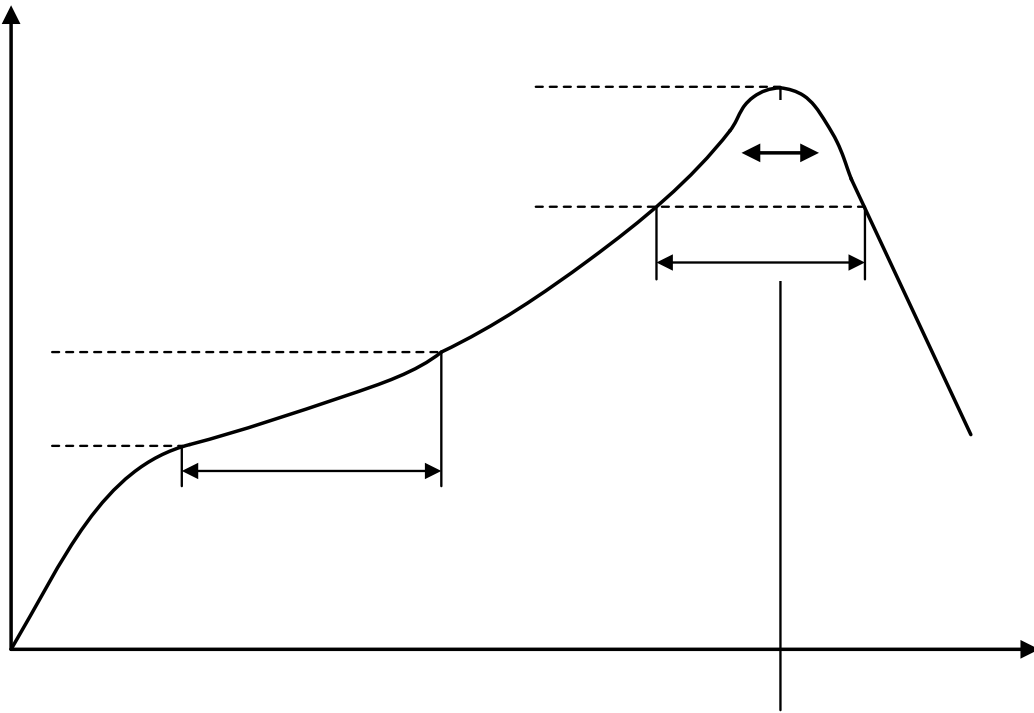
8- 1

E	^ >	s / ^ K
B	B	
B	B	
B	G	
B	G	
B	G	







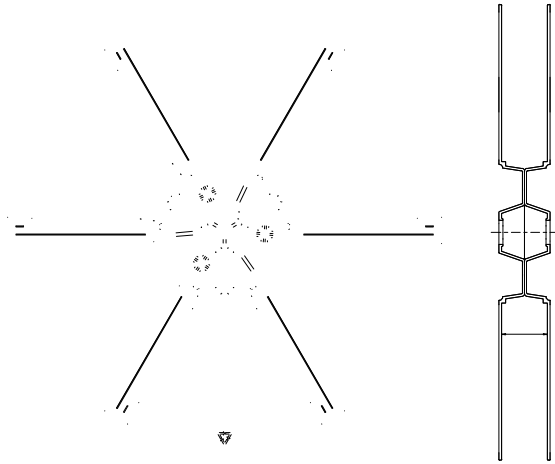


ქ

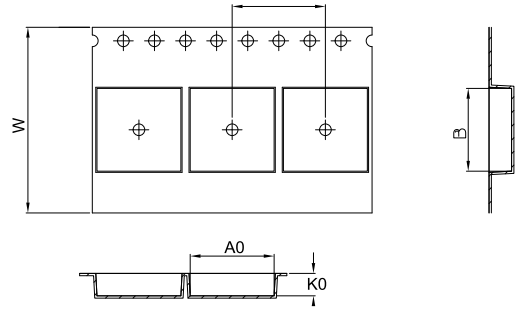
ქ



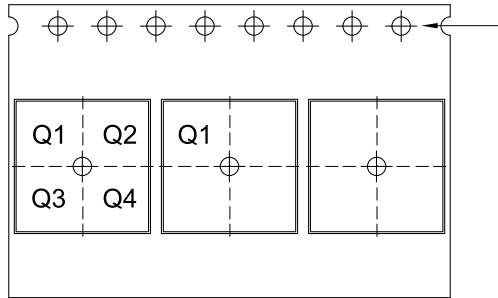
REEL DIMENSIONS



TAPE DIMENSIONS




QUADRANT ASSIGNMENTS FOR PIN 1 ORIENTATION IN TAPE



Ä]	W   P dÇ %	W   P C E Ä]	vYv•	^WY	Z o ] u š ~uu•	Z o t] s t i ~uu•	i uu•	i ~uu	<i uu•	W uu•	t uu•	vYv i Y μ C E
r/ ^ i i i n t	B											

B



ZŠ WIIÁÁÁX Z]‰ v o}PX }u